

FLEXPOST-XL™ ANCHORING INSTRUCTIONS FOR ASPHALT

Tools Required:

- Rubber Mallet
- Wax Pencil / Marker
- 3/4" Masonry Drill Bit
 - 5/16" Ratchet
- Torque Wrench (Optional)

Parts Included:

- 1 Base Plate
- 4 Expansion Plugs
- 4 Hex Lag Screws
- 4 Flat Washers
- (1) 3/16" Allen Key



- 1**
- Place base plate in desired anchoring location
 - Mark the four base holes with a wax pencil



- 2**
- Using a 3/4" masonry bit, drill 5" in depth



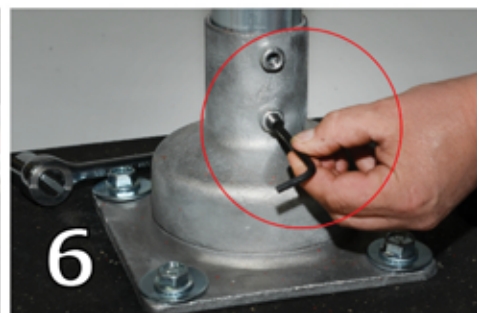
- 3**
- Use a rubber mallet to stuff expansion plugs into the drilled holes



- 4**
- Make sure the top of each expansion plug is flush with the asphalt surface



- 5**
- Place the base plate over the four holes and use a socket wrench with a 15/16" drive to thread all four hex lag screws



- 6**
- Insert post over spring, tighten both set screws to 100 ft. lbs. with a torque wrench or 3/16" allen key to hold post securely in place.
 - ** Re-torque as needed **

FLEX
POST

2236 112th Ave, Suite 80
Holland, MI 49424
616-928-0829 • www.FlexpostInc.com